



CORE STRATEGY

DEVELOPMENT PLAN DOCUMENT 2025

Adopted xxxx

LDF
TOWER
HAMLETS



Production

Content, design and graphics by:
Strategic Planning Team
Development & Renewal Directorate
Tower Hamlets Council

LDF hotline - 020 7364 5367
ldf@towerhamlets.gov.uk
www.towerhamlets.gov.uk



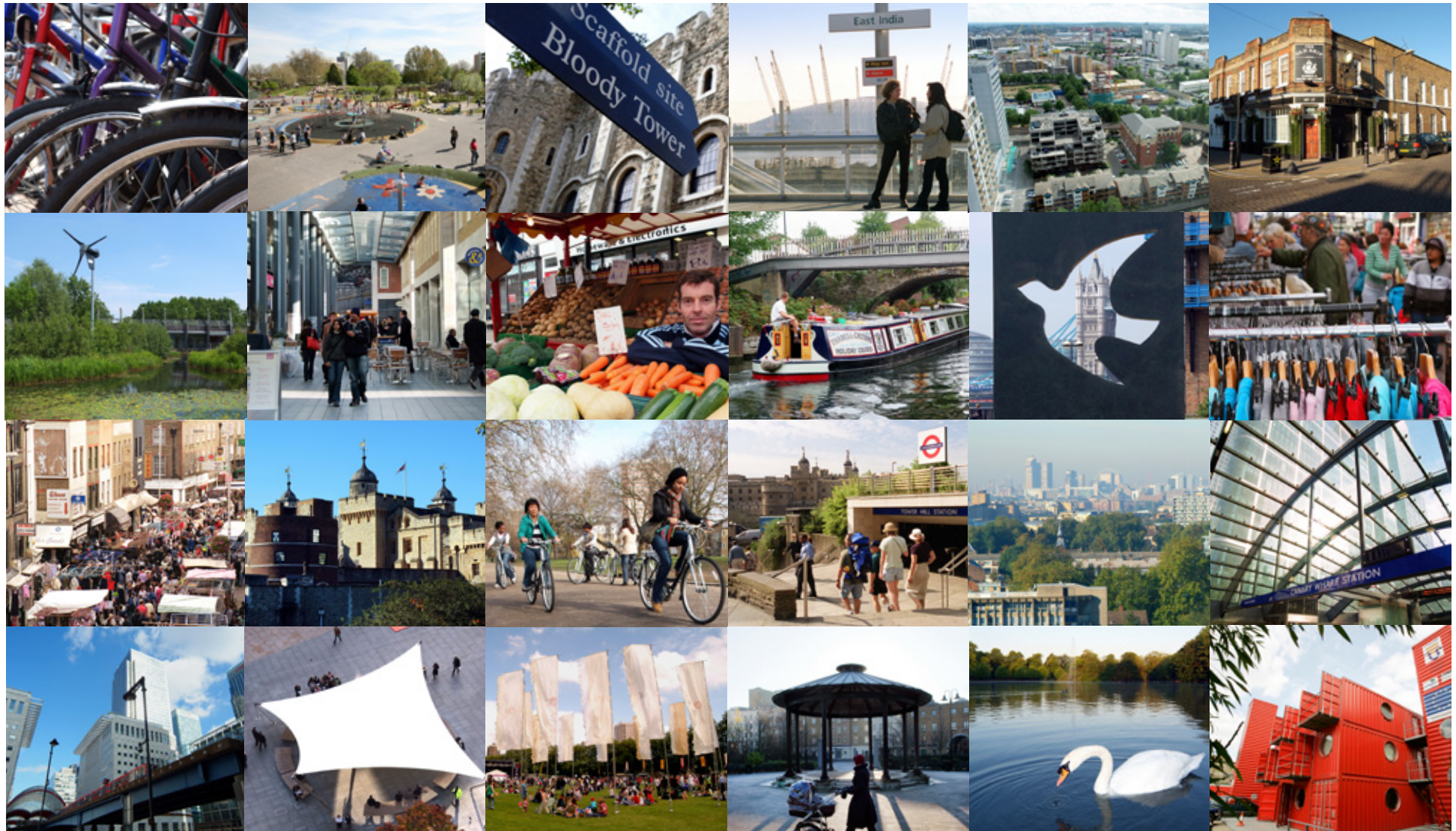
Tower Hamlets Partnership



Ordnance Survey mapping is provided by London Borough of Tower Hamlets under licence from the Ordnance Survey in order to fulfil its public function to act as a Planning Authority.

Maps in this document are based upon Ordnance Survey material with the permission of Her Majesty's Stationary Office. Unauthorised reproduction infringes Crown Copyright and may lead to prosecution and/or civil proceedings.
Crown Copyright. All Rights Reserved. London Borough of Tower Hamlets 100019288 2009





Foreword

The Community Plan sets out an ambitious vision for the borough; but it is achievable. The Core Strategy is one of the key tools to realise the vision of the Community Plan. It provides us with a 15 year plan which will shape what our borough looks like in the future.

At the heart of the Core Strategy's vision is the concept of reinventing the hamlets. The East End's historic hamlets, or places, are what makes our borough unique and strong. From the Victorian terraces of Bow to the modern high rise offices of Canary Wharf, and from the hustle and bustle of Spitalfields and Brick Lane to the peace and tranquillity of Victoria Park, these places all come together to create One Tower Hamlets.

Despite the ongoing successes of Tower Hamlets, we still face some difficult challenges. Foremost among them is the need to ensure there are sufficient good quality affordable homes for families in places that encourage healthy and sustainable living. We are also striving to ensure our streets and open spaces are safe and attractive for everyone to use and enjoy. Continuing to improve education and skills as well as provide opportunities for employment and enterprise remains another high priority.

The Core Strategy will also enable us to harness the opportunities available to us. The growth in the City and Canary Wharf, the Thames Gateway development and the 2012 Olympics puts Tower Hamlets firmly at the heart of London's future growth and success.

Taking its lead from our Community Plan, the Core Strategy recognises the importance of working in partnership. Together, we will seek to build on the existing qualities and strengths of each place to make Tower Hamlets a truly great place to live.

This Strategy has been shaped by ongoing consultation and engagement involving local people, businesses and communities, as well as service providers and key stakeholders.

I would like to thank everyone who has inputted into Core Strategy so far and look forward to your comments.



Moz

Councillor Marc Francis
Lead Member,
Housing and Development

Table of contents

Chapter	Strategic Objective	Spatial Policy	Page Number
1 Setting the scene Building a spatial strategy Putting it into perspective One Tower Hamlets			12 14-15 16-19 20-22
2 The Big Spatial Vision A spatial vision for Tower Hamlets and key diagram Delivering our regional role Achieving wider sustainability	SO1 SO2 SO3		24 26-29 30-31 32-33
3 Refocusing on our town centres Refocusing on our town centres	SO4 SO5 SO6	SP01	34 36-41
4 Strengthening neighbourhood well-being Urban living for everyone Creating healthy and liveable neighbourhoods Creating a green and blue grid Dealing with waste	SO7 SO8 SO9 SO10 SO11 SO12 SO13 SO14	SP02 SP03 SP04 SP05	42 44-48 49-52 53-56 57-59
5 Enabling prosperous communities Delivering successful employment hubs Improving education and skills	SO15 SO16 SO17 SO18	SP06 SP07	60 62-65 66-69

6	Designing a high-quality city			70
	Making connected places	SO19	SP08	72-75
	Creating attractive and safe streets and spaces	SO20 SO21	SP09	76-79
	Creating distinct and durable places	SO22 SO23	SP10	80-83
	Working towards a zero-carbon borough	SO24	SP11	84-87
7	Delivering placemaking			88
	Delivering placemaking	SO25	SP12	90-91
8	Delivery and monitoring			92
	Delivery and implementation		SP13	94-95
	Plan, monitor and manage			96-97
9	Annex: Delivering placemaking			98
	The places of Local Area Partnerships 1 and 2: Shoreditch, Spitalfields, Bethnal Green, Globe Town			100-103
	The places of Local Area Partnerships 3 and 4: Tower of London, Aldgate, Whitechapel, Wapping, Shadwell, Stepney, Limehouse			104-110
	The places of Local Area Partnerships 5 and 6: Victoria Park, Fish Island, Bow, Mile End, Bromley-by-Bow, Bow Common			111-117
	The places of Local Area Partnerships 7 and 8: Poplar, Poplar Riverside, Leamouth, Blackwall, Canary Wharf, Millwall, Cubitt Town			118-124
10	Appendices			126
	Appendix one	Glossary of terms and acronyms		128-133
	Appendix two	Programme of Delivery		134-149
	Appendix three	Monitoring framework		150-159
	Appendix four	Town centre hierarchy		160-161
	Appendix five	Superseded policies		162-169
	Endnotes			170-171

List of figures

1	The Local Development Framework	14
2	The spatial scales of planning in Tower Hamlets	15
3	Global context	16
4	National context	17
5	Regional context	19
6	Deprivation in Tower Hamlets	20
7	Population by ethnicity	21
8	Historic Hamlets	21
9	Population age structure	21
10	Community Plan	22
11	Core Strategy	22
12	Reinventing the hamlets	26
13	Key diagram	27
14	The spatial vision and spatial themes	28
15	Delivering Tower Hamlets regional role	31
16	Vision and spatial strands	32
17	Health determinants	33
18	Refocusing on our town centres	36
19	Place and town centre relationship	37
20	Hierarchy of town centres	37
21	The design and spatial layout of town centres	38
22	Urban structure and town centre plan	39
23	Urban structure and town centre section	39
24	Urban living for everyone	44
25	Housing growth by place	45
26	Net additional homes per year	45
27	Housing density and town centre hierarchy	46
28	Spatial distribution of housing from town centre to out of centre	46
29	Creating healthy and liveable neighbourhoods	49
30	Creating a green and blue grid	53
31	Dealing with waste	57
32	Waste hierarchy	59
33	Delivering successful employment hubs	62

34	Improving education and skills	66
35	Making connected places	72
36	Creating attractive and safe streets and spaces	76
37	Creating distinct and durable places	80
38	Working towards zero-carbon borough	84
39	Strategic visions for places	90
40	Core Strategy delivery	95
41	Monitoring indicators	97
42	Core Strategy review process	97
43	Shoreditch vision diagram	100
44	Spitalfields vision diagram	101
45	Bethnal Green vision diagram	102
46	Globe Town vision diagram	103
47	Tower of London vision diagram	104
48	Aldgate vision diagram	105
49	Whitechapel vision diagram	106
50	Wapping vision diagram	107
51	Shadwell vision diagram	108
52	Stepney vision diagram	109
53	Limehouse vision diagram	110
54	Victoria Park vision diagram	111
55	Fish Island vision diagram	112
56	Bow vision diagram	114
57	Mile End vision diagram	115
58	Bromley-by-Bow vision diagram	116
59	Bow Common vision diagram	117
60	Poplar vision diagram	118
61	Poplar Riverside vision diagram	119
62	Leamouth vision diagram	120
63	Blackwall vision diagram	121
64	Canary Wharf vision diagram	122
65	Millwall vision diagram	123
66	Cubitt Town vision diagram	124

How to use this document

The Core Strategy is the key spatial planning document for Tower Hamlets, setting out the spatial vision for the borough and how it will be achieved.

To understand the overall vision and how the Core Strategy aims to achieve it, the document needs to be understood in its entirety. However, the document has also been structured for ease of use.

The five spatial themes form the bulk of the document.

- Refocusing on our town centres
- Strengthening neighbourhood well-being
- Enabling prosperous communities
- Designing a high-quality city
- Delivering placemaking

These are grouped into two parts containing the borough-wide strategies (Chapters 3 to 6) and delivering placemaking (Chapter 7).

Whilst the borough-wide strategies set out the objectives and policies for the entire borough, the placemaking chapter illustrates how these strategies will shape the 24 individual places.

Each borough-wide strategy is formed of strategic objectives (SO), a map showing the spatial representation of the strategy, a spatial policy (SP) and justification for the strategy. The placemaking chapter consists of a vision for the place, a map - illustrating the vision, details of opportunities and growth - and strategic priorities and principles.

This document is high-level and spatial, hence maps, drawings and diagrams are provided throughout to express the vision and show where things will happen. These are for indicative and illustrative purposes only and are not intended to be site specific.

The next page shows how each borough-wide strategy and the placemaking chapter is structured.

Setting the scene

Outlines the global, national, regional and local context for spatial planning in the borough. Also sets out the role and relationship of the Core Strategy with the Community Plan 2020.

The Big Spatial Vision

Sets out the spatial vision for the borough along with the key diagram and principles underpinning this vision. The chapter also sets out the strategic objectives of how we will deliver our regional role, maximise the Olympics and achieve wider sustainability.

Refocusing on our town centres

Strengthening neighbourhood well-being

Enabling prosperous communities

Designing a high-quality city

These four chapters detail the borough wide strategies.

Delivering placemaking

Presents for each place the vision, the priorities and principles that will assist in delivering place making across Tower Hamlets.

Delivery and monitoring

Sets out how the Core Strategy will be delivered and monitored.

Appendices

Contains the Glossary of terms; Programme of delivery; Monitoring framework; Town centre hierarchy; List of superseded policies; Key challenges and objectives matrix; and Endnotes.

Structure of borough-wide strategies

Where we want to be

SO01

Ut peres sed quam quassi sinvende doluptae-
ctur molorepro et esectotae sita animusdae-
sti beribus digenis rem rero et ut veruptatur
simagna turepta tibust, quibus.
Itatum labore nullati untur? To eos ium aut
excepre peruptam eaquia ab ium inihillor aut
millit, ut re, volorum facit veniati ullam sim solor
aut officias am qui num, que nim excepta



What it will look like

Shows an illustrative spatial
representation of the strategy
on a map

Where we want to be

Sets out the borough wide strategic objectives that will enable us to get where we want to be

How we are going to get there SP01

Ut peres sed quam quassi sinvende doluptae-
ctur molorepro et esectotae sita animusdae-
sti beribus digenis rem rero et ut veruptatur
simagna turepta tibust, quibus.
Itatum labore nullati untur? To eos ium aut
excepre peruptam eaquia ab ium inihillor aut
millit, ut re, volorum facit veniati ullam sim solor
aut officias am qui num, que nim exceptalbea-
tibus magnitium hic tempelic toressinctio dusae
nimi, optas eum aliatur aces quibusae pro tem

How we are going to get there

Sets out the spatial policies which will guide development throughout the borough.

Why we have taken this approach

Onsequat ea volupti aectus sit autem. Occuptur
simus reritaspe pa amendan tionseque por aut et
as ut ullicia pos aut aut quam ad quatur autempore
volupis explis corit litibusandam aut pre volorest,
consend ebisto quiandelest, od ullore plias elitiam,
nonseque rem enem fugitatur sequi nem. Am que
id quiaspernam fugia pe net qui doluptius, omnimus
quam aceaqui doluptatem. Ucient laborro quiatius
eum id quae et rectatin essimusciis minvelendi
doluptatemo ma ditiisti doloreped eniendes esciic
illectuptae nobitatibea volorerum auta num quos et
as quam ressitia nimin prerum, sincima ximodit,

Why we have taken this approach

Explains and justifies the approach taken and links it to the relevant evidence base that supports it.

Structure of delivering placemaking

Vision

Ut peres sed quam quassi sinvende doluptae-
ctur molorepro et esectotae sita animusdae-
sti beribus digenis rem rero et ut veruptatur
simagna turepta tibust, quibus.
Itatum labore nullati untur? To eos ium aut
excepre peruptam eaquia ab ium inihillor aut
millit, ut re, volorum facit veniati ullam sim solor
aut officias am qui num, que nim excepta



Vision diagram

Provides an annotated and illustrative diagram of the vision

Vision

Describes what the place will be like

Opportunities and growth

Onsequat ea volupti aectus sit autem. Occuptur
simus reritaspe pa amendan tionseque por aut et
as ut ullicia pos aut aut quam ad quatur autempore
volupis explis corit litibusandam aut pre volorest,
consend ebisto quiandelest, od ullore plias elitiam,
nonseque rem enem fugitatur sequi nem. Am que
id quiaspernam fugia pe net qui doluptius, omnimus
quam aceaqui doluptatem. Ucient laborro quiatius
eum id quae et rectatin essimusciis minvelendi
doluptatemo ma ditiisti doloreped eniendes esciic
illectuptae nobitatibea volorerum auta num quos et
as quam ressitia nimin prerum, sincima ximodit,

Opportunities and growth

Indicates the opportunities for change and growth likely to arise

How we are going to get there

Ut peres sed quam quassi sinvende doluptae-
ctur molorepro et esectotae sita animusdae-
sti beribus digenis rem rero et ut veruptatur
simagna turepta tibust, quibus.
Itatum labore nullati untur? To eos ium aut
excepre peruptam eaquia ab ium inihillor aut
millit, ut re, volorum facit veniati ullam sim solor
aut officias am qui num, que nim excepta

How we are going to get there

Sets out the priorities and wider principles that will guide development towards the vision.